

SOLIMO CONSTRUCTIONS PRESENTS:

# THE VIC

**SOLIMO**  
CONSTRUCTIONS



7 STAR  
ENERGY  
RATING



30 YEAR  
BUILDER  
GUARANTEE

Solimo Constructions proudly presents *The Vic* – a beautifully designed three-bedroom, two-bath home featuring a range of high-quality inclusions. Whether you choose to build on one of our blocks or your own, *The Vic* is ready to welcome you home.

No hidden costs - Just move in

On your block for only

**\$499,000**

## ABOUT US

Solimo Constructions is a family-owned custom building and construction company based in North East Victoria. With years of industry experience, we specialise in delivering high-quality building solutions tailored to your unique needs.

We pride ourselves on treating our clients like family, ensuring a collaborative, transparent process from start to finish. Whether you want to be hands-on with the design or leave the details to us, we offer the flexibility to suit your preferences.

Our focus on craftsmanship, personalised service, and clear communication ensures your vision is brought to life, creating spaces that truly reflect you.

## CONTACT:

Jordan 0438 982 395 | Dan 0467 055 702

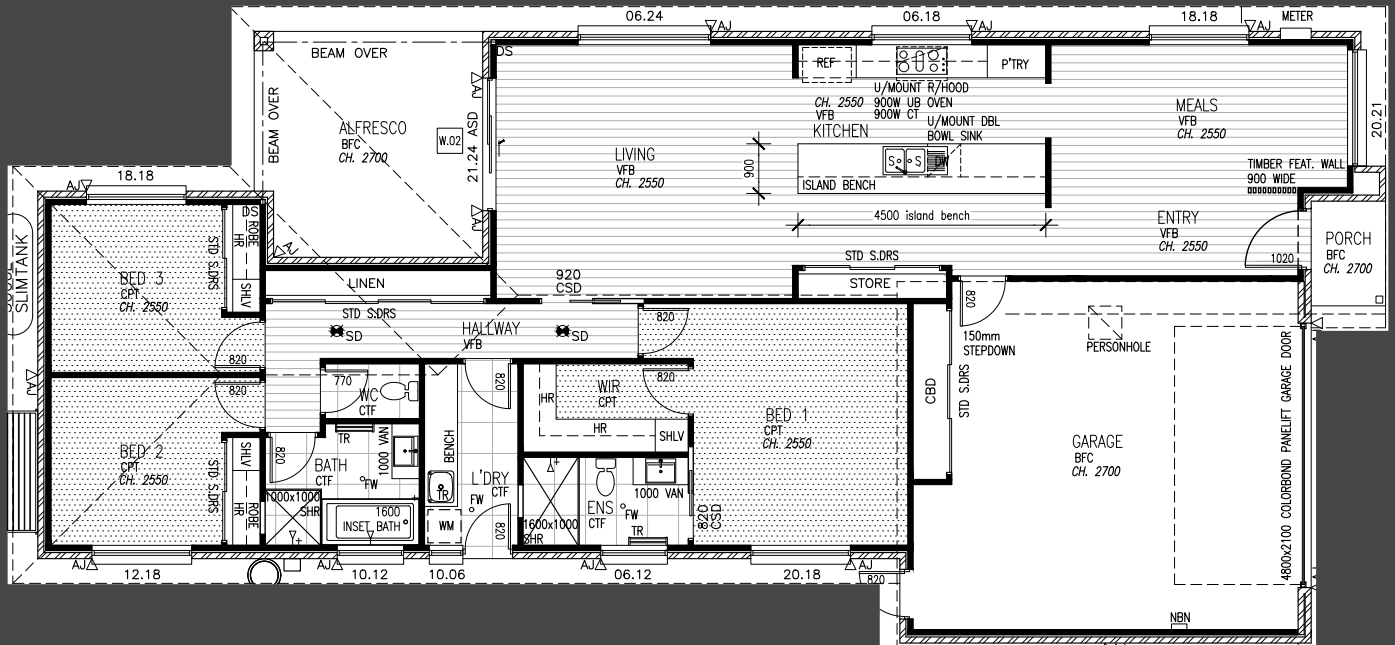
108 Greta Road Wangaratta

admin@solimoconstructions.com



[solimoconstructions.com](http://solimoconstructions.com)

## THE VIC



### FEATURES

- 6.6kw solar
- Ducted refrigerated cooling and heating
- Quality Westinghouse 900mm appliances plus dishwasher
- 5,000 litre tank
- Quality vinyl planks and carpet
- Double glazed windows
- Stone benchtops

### INCLUSIONS AND FREE UPGRADES

- ✓ TERMITE TREATED T2 TIMBER FRAME & TRUSSES
- ✓ TERMITE PLAN & BARRIER SUPPLIED
- ✓ R5.0 HIGH PERFORMANCE CEILING INSULATION
- ✓ R2.5 HIGH PERFORMANCE WALL INSULATION
- ✓ ANTICON BLANKET INSULATION UNDER ROOF
- ✓ 6.6KW SOLAR SYSTEM
- ✓ DOUBLE GLAZED WINDOWS
- ✓ REFRIGERATED DUCTED HEATING & COOLING
- ✓ ELECTRONIC FRONT DOOR LOCK WITH EASY ENTRY
- ✓ ALUMINIUM FRONT GLASS DOOR
- ✓ GALVANISED MESH SECURITY DOORS
- ✓ PANEL LIFT GARAGE DOOR
- ✓ 2 PANEL LIFT DOOR OPENERS AND ONE WALL MOUNTED
- ✓ HEAT PUMP HOT WATER
- ✓ RAIN WATER TANK & PUMP PLUMBED TO TOILETS
- ✓ QUALITY TAPS, FITTINGS, BATH, SHOWER, EXTERNAL TAPS & FIXTURES
- ✓ CONCRETE DRIVEWAY, PORTICO, ALFRESCO & UNDER RAIN WATER TANK
- ✓ SELECT FROM OVER 20 DIFFERENT BRICKS
- ✓ LARGE RANGE OF COLORBOND ROOF COLOURS, TILE SELECTION, CARPET AND VINYL PLANKS
- ✓ SELECTION OF CABINET COLORS, LIGHTING & RAINWATER TANK
- ✓ STAINLESS WESTINGHOUSE 900MM OVEN, STOVE, RANGEHOOD AND DISHWASHER
- ✓ STONE BENCH TOPS THROUGHOUT
- ✓ INTERIOR DESIGN PACKAGE
- ✓ PROFESSIONAL CLEAN BEFORE HANDOVER
- ✓ PLUS MUCH, MUCH MORE...

### NOTES

---



---



---



---



---



---



---



---

